



# GMT MONTHLY MEMBERSHIP PROGRESS REPORT

Results as of: 5/31/2020

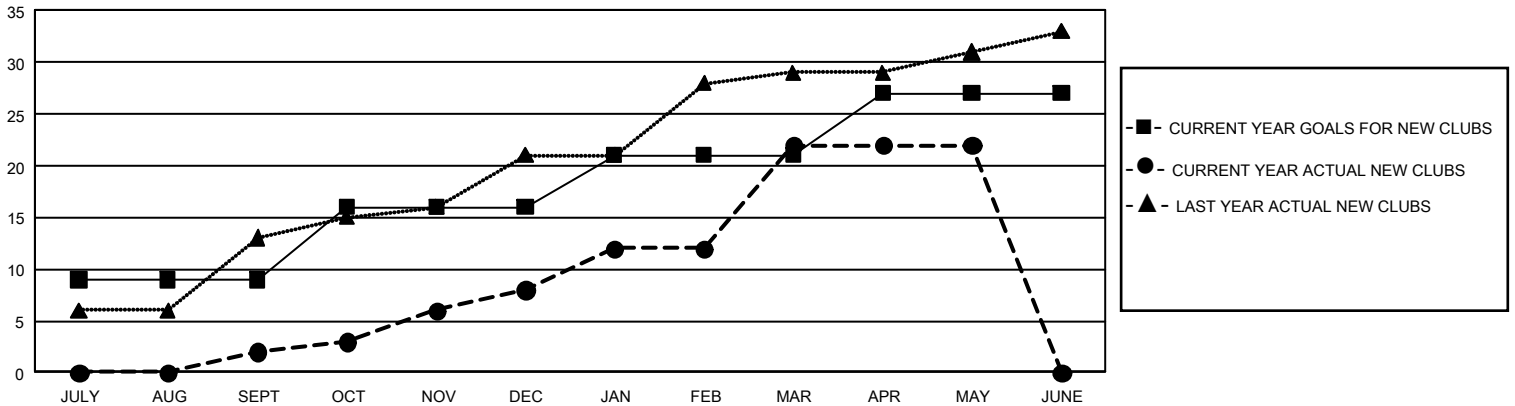
## GMT Constitutional Area 6, Group F

GMT: OPEN

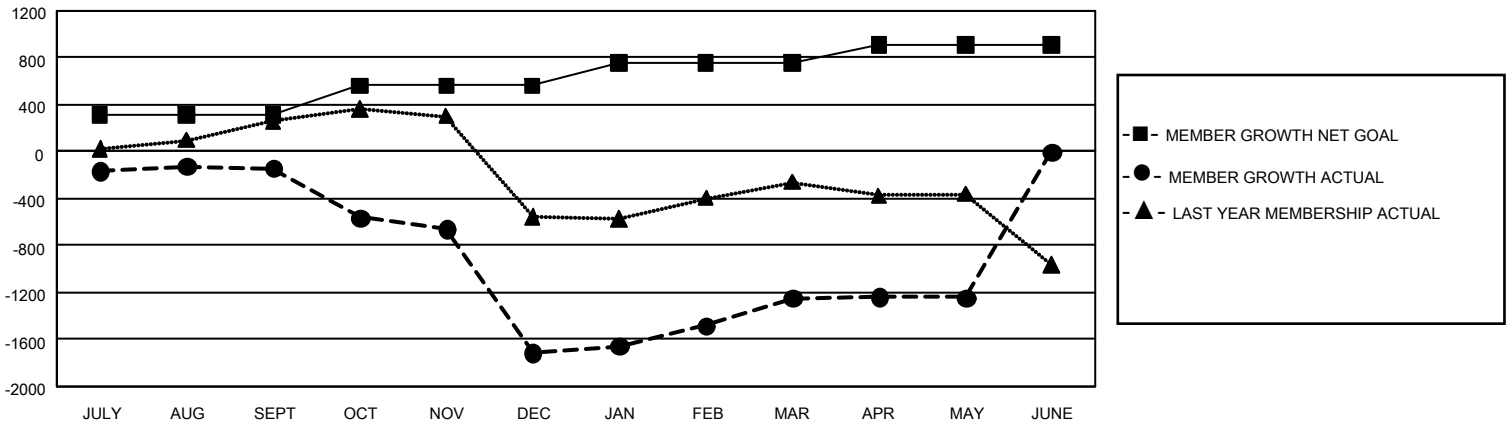
REPORT DOES NOT INCLUDE CLUBS IN UNDISTRICTED AREAS.

Clubs				Members			
RESULTS FOR 2019-2020				RESULTS FOR 2019-2020			
QUARTER	NEW CLUB GOAL	NEW CLUBS	DROPPED CLUBS	QUARTER	MEMBER GROWTH NET GOAL	MEMBER GROWTH ACTUAL	DROPPED MEMBERS ACTUAL (including transfers)
JULY/AUG/SEPT	27	2	5	JULY/AUG/SEPT	930	521	566
OCT/NOV/DEC	21	6	23	OCT/NOV/DEC	765	368	1,914
JAN/FEB/MAR	15	14	4	JAN/FEB/MAR	585	693	134
APR/MAY/JUNE	18	0	1	APR/MAY/JUNE	450	279	243

**GOALS AND ACTUAL NEW CLUBS CUMULATIVE**



**GOALS AND ACTUAL MEMBERS CUMULATIVE**



<b>DROPPED CLUBS: 33</b>	197 CLUBS OF 439 ADDED 1 OR MORE NEW MEMBERS	<b><u>GENDER DISTRIBUTION</u></b> MALE            11,223 (80.07%) FEMALE         2,793 (19.93%)
<b><u>DROPPED MEMBERS</u></b> DECEASED                    35 CLUB CANCELLED            1,241 OTHER                         1,581 <hr/> <b>TOTAL                            2,857</b>	<a href="#">CLICK HERE FOR CUMULATIVE MEMBERSHIP DATA</a>	TOTAL FAMILY UNIT MEMBERS            4,288  FAMILY MEMBERS PAYING HALF DUES    2,628